



GRADE 8 COURSE SELECTION

2022-2023





WELCOME CLASS OF 2027!

<https://youtu.be/lbdmTYxQiTM>



OUR SCHOOL ADMINISTRATION

Principal



Ms. Dianne Carr

Vice-Principal

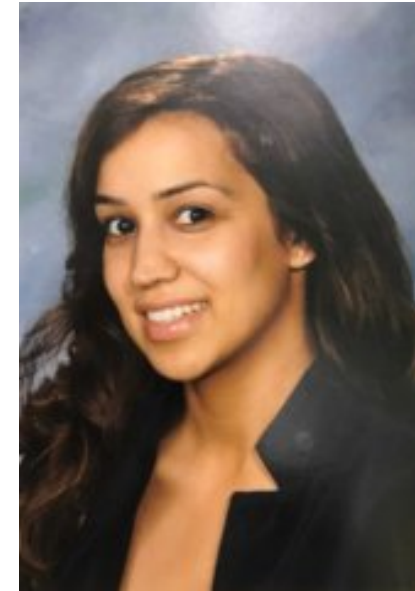
A – Lee
BWC/WC, Indigenous



Mr. Daryl Goeson

Vice-Principal

Lef-Z
International



Ms. Angela Basran



COUNSELLING TEAM

A – I



Ms. Rosa
Westinghouse

**J - Oh
Indigenous**



Ms. Becky Lawrence
(Department Head)

Oi - Wal



Ms. Rhiannon Jones

**Wam - Z
International
BWC/WC**



Mr. Katsionis



SAFE SCHOOLS SPECIALIST



Wayne Best



SCHOOL TOUR

<https://youtu.be/xaSHiP4T-W0>



GRADE 8 CLASSES

- 1) English 8
- 2) Social Studies 8
- 3) Mathematics 8
- 4) Science 8
- 5) Physical & Health Education 8
- 6) French 8
- 7) ADST Rotation
 - Home Economics (foods & textiles)
 - Technology Education
 - Business Education
- 8) Fine Arts
 - Choice of:
 - Fine Arts Rotation (includes dance, drama & art)
 - OR
 - Band / Beginner Band
- 9) *Choir*
 - *7:20 am (“off-timetable”)*
 - *Can be your 9th class*



COURSE SELECTION

- Forms have been given to your Grade 7 teacher
- Give your form back to your Grade 7 teacher by **Feb. 18th**
- Course verification forms will be sent to your teacher in April for you to double-check your choices
- Your schedule will be available on MyEducationBC by the Friday before school starts in September
 - Before then, try logging in!
 - You need your student number and the password that was given to you
 - You will be asked to change the password
 - **WRITE DOWN YOUR NEW PASSWORD SO YOU DON'T FORGET IT!**



HIGH SCHOOL SCHEDULE

MONDAY	TUESDAY	WEDNESDAY	THURSDAY	FRIDAY
PERIOD X 7:20 - 8:35	PERIOD X 7:20 - 8:35	PERIOD X 7:20 - 8:35	PERIOD X 7:20 - 8:35	PERIOD X 7:20 - 8:35
WARNING BELL 8:35	WARNING BELL 8:35	WARNING BELL 8:35	WARNING BELL 8:35	WARNING BELL 8:35
FLEXIBLE STUDENT SUPPORT TIME 8:40 - 9:10	FLEXIBLE STUDENT SUPPORT TIME 8:40 - 9:10	FLEXIBLE STUDENT SUPPORT TIME 8:40 - 9:10	FLEXIBLE STUDENT SUPPORT TIME 8:40 - 9:10	EXTENDED FLEX / TEACHER COLLAB 8:40 - 9:30
PERIOD 1 9:10 - 10:23	PERIOD 1 9:10 - 10:23	PERIOD 1 9:10 - 11:51	PERIOD 2 9:10 - 11:51	PERIOD 1 9:30 - 10:38
NUTRITION BREAK WARNING BELL 10:33	NUTRITION BREAK WARNING BELL 10:33			NUTRITION BREAK WARNING BELL 10:48
PERIOD 2 10:38 - 11:51	PERIOD 2 10:38 - 11:51	LUNCH BREAK WARNING BELL 12:31	LUNCH BREAK WARNING BELL 12:31	PERIOD 2 10:53 - 12:01
LUNCH BREAK WARNING BELL 12:31	LUNCH BREAK WARNING BELL 12:31			LUNCH BREAK WARNING BELL 12:41
PERIOD 3 12:36 - 1:48	PERIOD 3 12:36 - 1:48	PERIOD 3 12:36 - 3:05	PERIOD 4 12:36 - 3:05	PERIOD 3 12:46 - 1:53
PERIOD 4 1:53 - 3:05	PERIOD 4 1:53 - 3:05			PERIOD 4 1:58 - 3:05
PERIOD Y 3:11 - 4:26	PERIOD Y 3:11 - 4:26	PERIOD Y 3:11 - 4:26	PERIOD Y 3:11 - 4:26	PERIOD Y 3:11 - 4:26



EXAMPLE TIMETABLE

SEMESTER 1 (September – January)
Fine Arts Rotation OR Band/Beginner Band
Social Studies 8
Physical & Health Education 8
Mathematics 8

SEMESTER 2 (February – June)
English 8
ADST Rotation
Science 8
French 8



OUTREACH CENTRE

- Staffed by Learning Support teachers
- Help with homework in all subject areas
- Open for drop-in:
 - Before school at 8:00 am every day
 - Lunch time every day
 - After school Monday to Thursday until 4:00 pm



ACADEMIC EXCELLENCE

Grade 8/9

- Enrichment offered within classes

Grade 10-12

- Enriched classes offered within classes
- Advanced Placement (AP) classes are available (similar to first-year university classes)

AP Classes:

- AP English Lit
- AP 2D Design Portfolio
- AP 3D Design Portfolio
- AP Studio Art: Drawing
- AP Micro/Macroeconomics
- AP Calculus
- AP Statistics
- AP Computer Science A
- AP Biology
- AP Psychology
- AP French Language
- AP Chinese Language & Culture



HOW TO HAVE A GREAT YEAR

- Be your best self
 - Attend all classes
 - Organization / time management
 - Give it your best effort!
- Get involved
 - Join a club, a sports team, or both!
 - Clubs Day is held at the end of September
- Ask lots of questions
 - Teachers, counsellors, administrators, and Wayne Best!



CLUBS & TEAMS

- Student Council / Grad Council
- WISH / T.R.U.S.T. / Interact
- Business / Entrepreneurship
- Green Team
- Robotics / Auto / Coding
- SOGI
- First Aid / Autism Network / P.A.W.S. (Peace and Wellness Society)
- Chess / Math / Beyond STEM
- Newspaper
- Art / Anime / Manga
- International / K-POP

Fall:

- Girls Volleyball
- Boys Rugby
- Boys Soccer
- Cross-Country (all grade levels)

Winter:

- Basketball – boys & girls
- Wrestling – boys & girls
- Swimming

Spring:

- Track & Field
- Boys Volleyball
- Girls Soccer
- Badminton, Netball, Tennis, Ultimate Frisbee

BURNABY CENTRAL SECONDARY SCHOOL

BURNABY SCHOOL DISTRICT



@burnabyschools

HOME

SCHOOL INFO ▾

DEPARTMENTS ▾

LIBRARY ▾

NUM/LIT ASSESSMENT ▾

STUDENTS ▾

PARENTS ▾

BLACK HISTORY MONTH

Black History Month

Click on the image to be directed to Central's Black History Month website



HAVE YOU DONE YOUR DAILY HEALTH CHECK TODAY?





COUNSELLING TEAM

A – I



Ms. Rosa
Westinghouse

**J - Oh
Indigenous**



Ms. Becky Lawrence
(Department Head)

Oi - Wal



Ms. Rhiannon Jones

**Wam - Z
International
BWC/WC**



Mr. Katsionis



SEE YOU IN SEPTEMBER!

